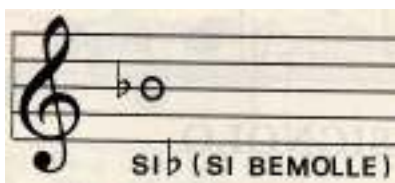
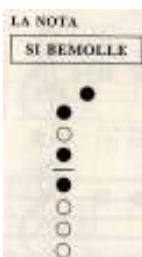
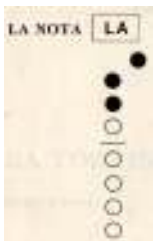
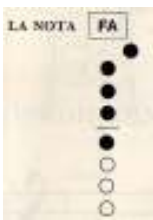
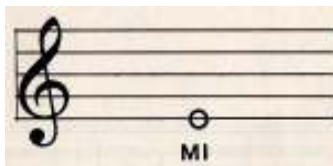
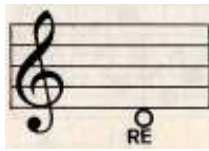
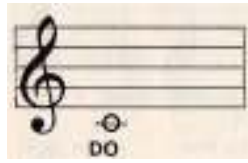
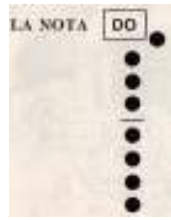


Le note musicali di "We wish you a Merry Christmas"

Il brano natalizio, "We wish a Merry Christmas", è scritto in FA Maggiore, ossia tra le sue note avremo il Si \flat . L'alterazione del bemolle (β) verrà segnata all'inizio del pentagramma, subito dopo la chiave di violino. **Il bemolle indica un abbassamento "sonoro" del suono Si.**

Queste sono le note musicali che dovremo utilizzare:



WE WISH YOU A MERRY CHRISTMAS

Moderato **fa+** **re-** **sol-** (*Inghilterra*)
We wish you a mer - ry Christ - mas, we wish you a mer - ry

Do+ **re-** **Do+**
Christ - mas, we wish you a mer - ry Christ - mas and a hap - py New

FA+
Year. Now bring us some fig - gy pud - ding, now bring us some fig - gy

pud - ding, now bring us some fig - gy pud - ding and— bring some out here!

